

Piece of a Pow Wow regalia from one of our previous events.



We acknowledge we are on Indigenous land, land inhabited by Indigenous peoples since time immemorial. **We acknowledge** this is the homeland of the Red River Métis people and that many of us are guests on this land we call home. **We acknowledge** we are all bound together by Treaty 1.



We are grateful for the original keepers of this territory and acknowledge we have much work to do on our shared road to reconciliation.

We are thankful for the opportunity to provide responsive and individualized services that foster the hopes and dreams of people and their communities, with the vision of building a community where all people have well-being, are honoured, and can dream.

We strive to incorporate our values of integrity, honour, holism, and respect in all the work that we do on these lands.

We respect the lands, waters, languages, cultures, and traditions of First Nations, Inuit, and Métis peoples of Canada, whose presence enriches Canadian society.

We respect and acknowledge that we are all Treaty people.

We are all connected through the spirit and intent of Treaties and Treaty Making.

The term “Indigenous” means First Nations, Métis, and Inuit peoples. We acknowledge the unique status of Indigenous peoples in Manitoba and throughout Canada. We are grateful to learn and share knowledge from the Indigenous peoples we have the honour of working with.



• MISSION:

To provide responsive and individualized services that foster the hopes and dreams of people and their communities.

• VISION:

A **community** where all people have well-being, are honoured, and can dream.

• VALUES:

Integrity – in all that we do.

Honour – the strengths of people and community.

Holism – emotional, spiritual, physical and intellectual, environmental and cultural.

Respect – for all people.







Land Acknowledgement	1
Mission, Vision, Values	2
Table of Contents	4
Officers/Committees	6
Chief Executive Officer's Report	8
President's Report	13
Areas of Service	16
STORY 1 – Theresa's 285	20
Fast Facts	25
Endowment Fund Donor Thank you	26
Endowment Fund Donors	28
STORY 2 – A Long Expected Ceremony	30
Thanks to Funders	34
STORY 3 – Local Resources for Global Issues	36
Thanks to Supporters	38
STORY 4 – Vaccine Clinic a Big Success!	40
Thanks to Employers	43
STORY 5 – Child Home & Support Services	44
STORY 6 – Expanding in New Directions	50
Years of Service Recognition	52
Treasurer's Report	56
Financial Statements	58







EXECUTIVE COMMITTEE

PRESIDENT

David Brand, CPA, CMA, CIA, CISA (Retired)

PAST PRESIDENT

Carolyn Strutt

TREASURER

Jim Court, FCPA, FCMA, TEP

EXECUTIVE SECRETARY

Beverly Sabourin

BOARD SECRETARY

Thiago deBarros

FINANCE COMMITTEE

Jim Court

NOMINATING COMMITTEE

Carolyn Strutt

BY-LAW REVIEW COMMITTEE

Carolyn Strutt

RESPECTFUL WORKPLACE COMMITTEE

Lorraine Desmarais

Rick Ratte

PLANNING COMMITTEE

Rhonda Taylor

Dr. Christine Watson

FINANCIAL AUDITORS

PricewaterhouseCoopers LLP

BOARD OF DIRECTORS

David Brand

Jim Court

Lorraine Desmarais

Art Ladd

Aveeve McLaughlin

Jorge Molina

Rick Ratte

Beverly Sabourin

Jennifer Sokal

Carolyn Strutt

Rhonda Taylor

Dr. Christine Watson

STAFF REPRESENTATIVES:

Brittany Finlayson

Shana Guenther

● “Working online, they have provided critical support to me and to all of New Directions.” – Dr. Jennifer Frain

A BSW student works with FASD alumni to craft stress balls, sponge balls and notepads for children supported by the program.





OUR THEME THIS YEAR IS GRATITUDE. A SIMPLE WORD WITH DEEP MEANING.

Gratitude: for all the people we work with and their resilience as we struggled to provide enough support to them during times of pandemic isolation and restrictions. We are grateful for their strength and understanding.

Gratitude: for the perseverance of our frontline staff, suiting up each shift in uncomfortable but critical PPE and doing their best to show their caring and remain connected through eye shields and masks to the people in their homes.

Gratitude: for the office staff continuing to work away in isolation of their peers and away from any of the fun that being with other team members offers. Our accounting and payroll staff, HR and recruiting staff, our clinical and therapeutic staff, our operations team and all others who worked steadily throughout last year doing their best to provide the supports necessary for the welfare of the people supported by our organization.

I am humbled and so very grateful to the staff of New Directions who continued to provide support to those we

serve despite the many challenges the pandemic presented.

And then as if a global pandemic wasn't enough, a fire at the very start of the new year, just as we were beginning to be able to offer more on-site services. I am so thankful that no one was hurt in the fire and so very grateful to the many community members who reached out to provide support and contributions to the Opikihiwawin fire fund.

I have always found the people in the community of New Directions inspiring, never more so than over the last year, through this enduring pandemic, fire disruption and never-ending winter.

I am also deeply appreciative of our volunteer Board members,



Food donations received through a partnership with Agape Table.



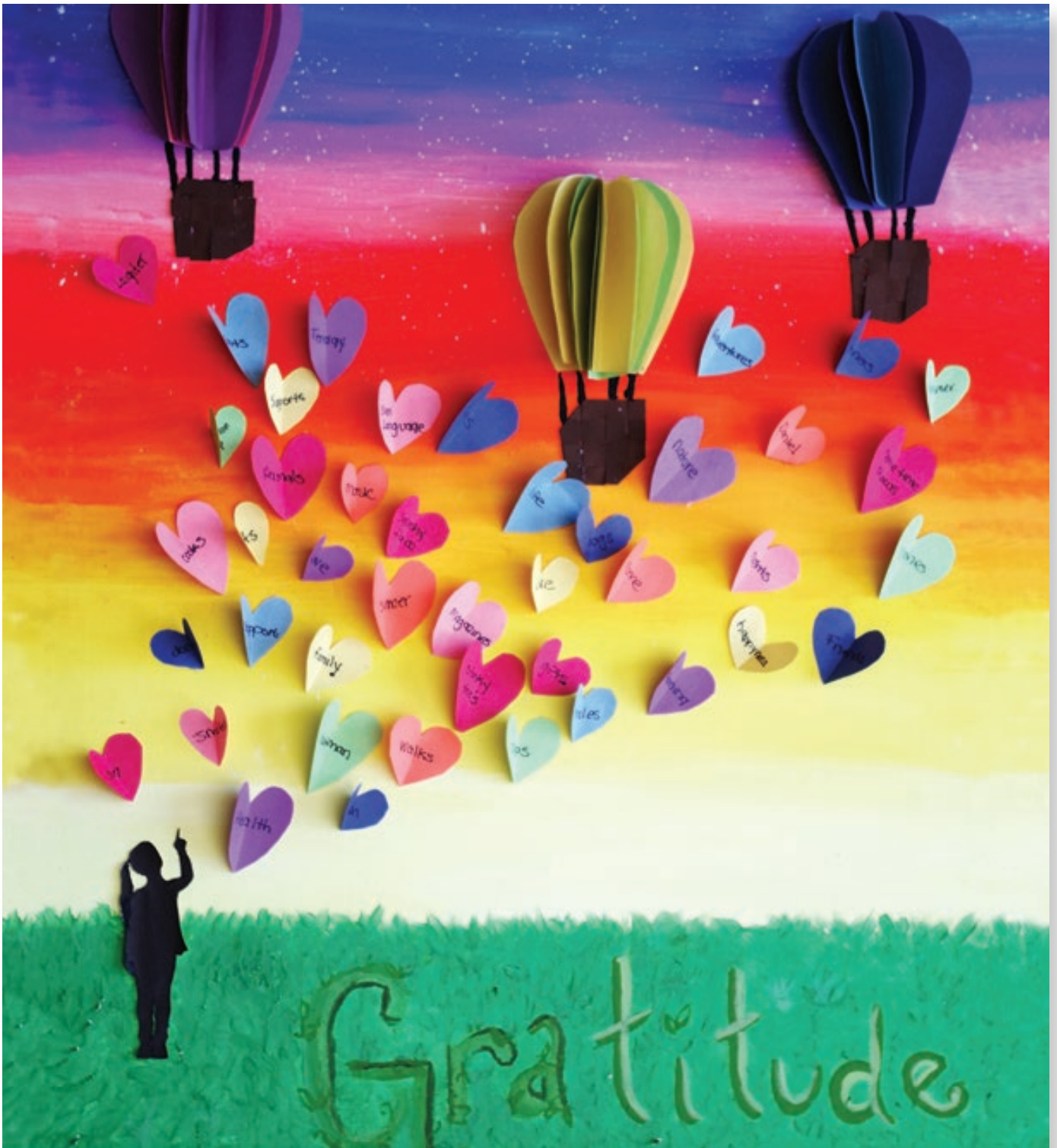
Shift Staffed Home celebrates an individual's 50th birthday.



Individuals from of one of our Shift Staffed Homes.



SSH Coordinators continue their tradition of preparing holiday baskets for staff and individuals in community homes.



several of whom joined during the pandemic and have provided their support without any of the fulfillment of meeting in person. Working online, they have provided critical support to me and to all of New Directions. We are sad to be saying goodbye to Dr. Christine Watson, VP at Red River Polytechnic, who is retiring from the Board after she provided years of great oversight with her always penetrating questions and unwavering support for New Directions. She was a great Co-Chair of the Planning Committee and linked New Directions to many of her contacts to help us in our work. We were also sorry to lose Beverly Sabourin from the Board and wish her the best in her move to Thunder Bay.

● “I have always found the people in the community of New Directions inspiring, never more so than over the last year...”

We are also grateful for each of the remaining Board members, and I especially want to thank David Brand, President, and Carolyn Strutt, Past President for extending their tenures in their roles and providing solid and steady leadership.

Finally I want to express my extreme gratitude for the leadership team, the Coordinators, Supervisors, Agency Managers and to my direct reports, Darlene Daniels, Dr. Alicia Ordóñez, Dr. Charmayne Dubé, Elizabeth Schwersensky and Michael Schroeder. Leadership has been critical through these difficult times and I am so deeply thankful to each and every one of them for their dedication, commitment and perseverance!

To close, as a psychologist, I am aware that the research is clear that gratitude is strongly and consistently associated with greater happiness. Psychologists coach clients to practice being grateful as it is good for their overall health, helps one deal with adversity and build strong relationships. I have found I don't really need to practice being grateful: I just am. Deeply and truly for all the good people in the New Directions community. And I am happy to have the opportunity to be the head of this great organization! ■

DR. JENNIFER FRAIN, C.Psych.
Chief Executive Officer





I'D LIKE TO TAKE THIS OPPORTUNITY TO EXPRESS MY SINCERE GRATITUDE

My gratitude to each and every one of the staff, Board members, funders, and to those in the community in which we serve for all the support and dedication in 2021/2022.

New Directions has had another year that will be hard to forget!

During the past year, I observed that New Directions continued to operate with the utmost professionalism and deliver the high-quality support services proving that its staff are able to do so in the face of adversity. Not only did staff have to contend with the pandemic's ups and downs, but also with a major disruption following the fire

at the head office. For that, I am and we all should be grateful.

Many of you who know me, have heard me mention the importance of people and organizations being nimble in the carrying out of their responsibilities. Never has the staff at New Directions had to prove themselves of that quality before these past several months! It is important for New Directions to be resilient in all that it does and to be forward thinking. When providing literally cradle to grave care in some instances, one has to be prepared for the challenges it faces. I think that is why New Directions stands out.

I often hear from the community in which we live about how great New Directions is, how it is well known for its tremendous work ethic and the respect the community has for the organization, for its staff, and the services which it brings forth.

I feel a tremendous sense of pride, and of course, gratitude towards everyone that has had a stake in New Directions' accomplishments this past year.

The growth that New Directions has seen in the demand for its services and





*Shift Staffed Home visits the
Dinosaurs UnCovered exhibition at
the Assiniboine Park Zoo*

expertise is a testament to its ability to delivery top quality services. That is why our funders seek out New Directions to come up with new and creative ways to provide for those in need. What better way to show gratitude than for those in need of our services to keep coming back (and asking for more!).

To those families that seek out New Directions' expertise and services and put trust in New Directions to provide for your loved ones in the best possible way, I say thank you. In my community, I have heard from parents of those individuals under the care of New Directions state that without the help from our staff, they would not know how they would have been able to cope with their child's needs. In a way, they are thanking all of

the staff, funders, and Board for stepping up to assist in making those individuals lives better and to foster those individuals' hopes and dreams.

I am very grateful to the Board, to volunteers, to the new additions and those who have been volunteering long-term. A huge thank you to our Board members for their acceptance of the virtual world we have had to contend for meetings and for getting initiatives completed. The Board has honored me by having me as their Board President and have all been very supportive of my Board position these past two years.

I look forward to connecting with staff, Board members, and funders in person in

the future. The Board is planning to move ahead with face-to-face meetings and presentations from service areas in the late fall. Amongst some of our initiatives, we will provide to support New Directions' fundraising activities and focus on strengthening the Board governance of New Directions.

I thank our outgoing Board members who have devoted their time and energies to various Board matters, in particular, thank you to Dr. Christine Watson, who, as Co-Chair of the Planning Committee, was an

integral part of the development of the renewed Strategic Plan released this past January, 2022. Thanks also to Beverly Sabourin, our Executive Secretary, for your unique insights and contributions to the Board.

Thank you to everyone who participated in and contributed to this Annual Report.

The artwork is always so very inspiring! I look forward to seeing you at the virtual AGM! ■

DAVID BRAND

Board President

● “To those families that seek out New Directions' expertise and services and put trust in New Directions to provide for your loved ones in the best possible way, I say thank you.”



ADULT SERVICES

ADULT DAY SERVICES

Offers education, recreation, and work experience to people with intellectual disabilities and/or mental health concerns.

ADULT FAMILY SUPPORTS

Provides community and home-based supports to adults living with intellectual/physical/mental health challenges who reside in their family home.

ADULT HOME SHARE

Connects a person needing support with a Home Share Provider and they live together in the provider's home.

REGIONAL SERVICES

Provides a range of resources offered by New Directions in areas outside of the city of Winnipeg.

SHIFT STAFFED HOMES

Provides safe and secure, 24-hour shift staffed residential care for adults with disabilities.

SUPPORTED CLUSTER HOUSING

An intensive housing model that provides a transitional setting for individuals grappling with multiple barriers to independent living.

SUPPORTED INDEPENDENT LIVING

Supports people who have intellectual disabilities and/or mental health concerns who are choosing to live independently in the community.

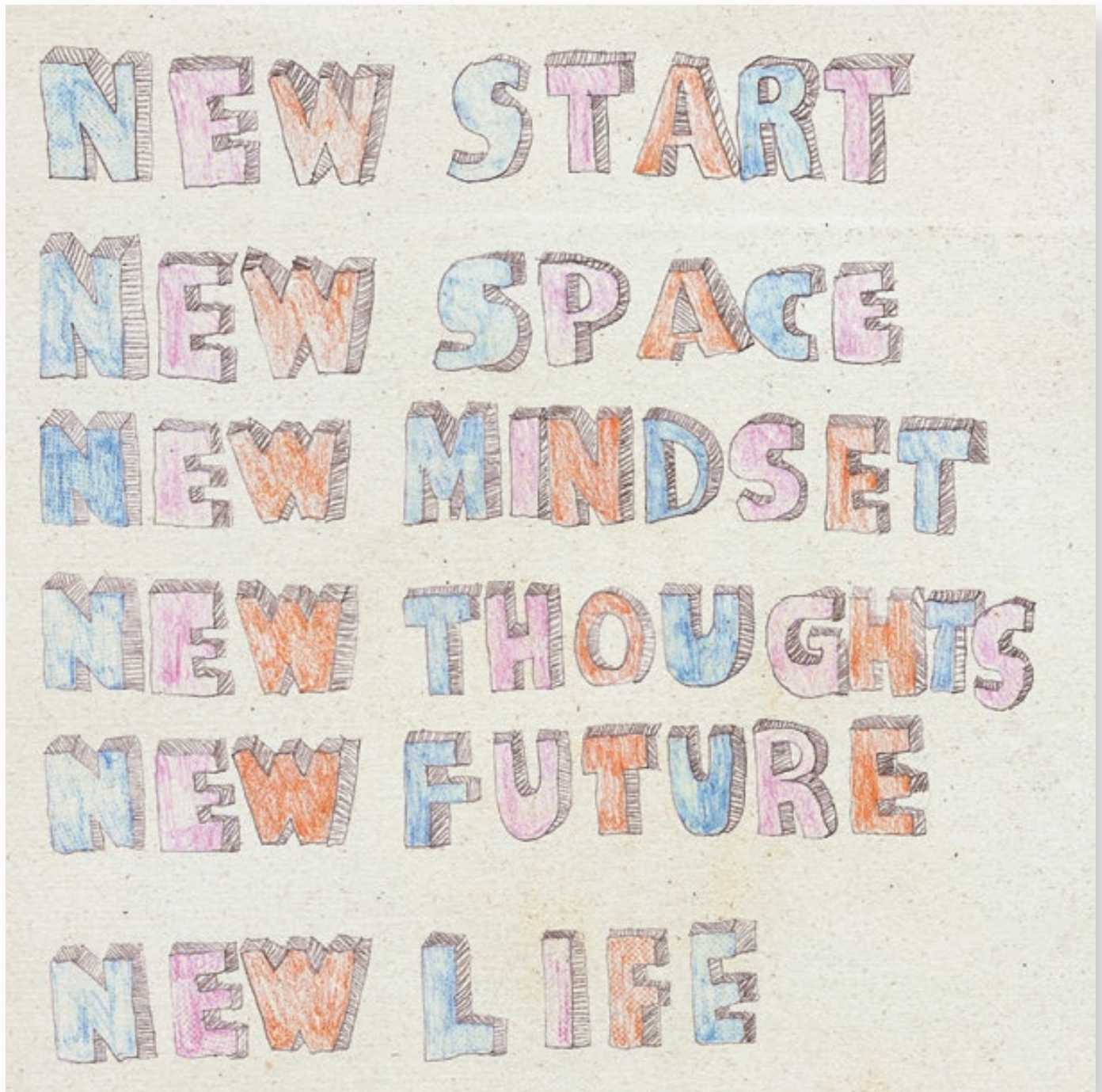
CHILD HOME SERVICES

COMMUNITY HOMES FOR CHILDREN

Offers a shared home environment, staffed 24/7, for children ages 8-12 or youth ages 13-18 where they can develop a sense of belonging and have opportunities to engage in a meaningful life, experience healing from past hardships and healthy development, and pursue their goals and dreams.

FAMILY CONNECTIONS

Offers supports for children and youth to have successful opportunities to fulfil their dreams of reunifying with their loved ones, or to move into an alternative home (foster home) where they



are loved, supported, can belong and contribute, and can keep meaningful connections with their culture, family and community.

FAMILY STEPPING STONES/ROOTS

Offers supports for families who struggle with parenting due to various factors (e.g., substance use, mental health, lack of resources, trauma, lack of supports, etc.) and whose children are in the care of CFS or at risk of coming into care.

INDEPENDENT LIVING & MENTOR LANDLORD

Youth get the opportunity to experience living in the community and develop independent living skills with individualized supports in place. The landlord has a dual role: regular landlord and mentor.

CLINICAL SERVICES

FAMILY THERAPY SERVICES

Provides support to families with children under the age of 18 through therapy, drop-in phone counselling, groups, and training.

FAMILIES AFFECTED BY SEXUAL ASSAULT

Provides therapy to families with children who have been sexually assaulted by someone that is not a parent or sibling.

FASD FAMILY SUPPORT, EDUCATION, & COUNSELLING

Works with families raising children with FASD or confirmed prenatal exposure to alcohol and identified challenges related to development, behaviour, learning, or sensory-based needs.



MULTI-DISCIPLINARY ASSESSMENT & CONSULTATION CENTRE

Offers diverse multidisciplinary clinical, cultural, and Deaf services to individuals who are unable to access community services due to systemic barriers (Psychology, Occupational Therapy, Psychiatry, Pharmacy, Dietitian, Nursing,).



Training Opportunities for Youth program holds a land-based teaching lesson at The Forks.

CULTURE, EDUCATION & TRAINING SERVICES

OPIKIHAWWIN

Responds to the needs of Indigenous foster and adopted children and youth and their families by providing cultural education, support, and advocacy.

RESOURCES FOR ADOLESCENT PARENTS

Offers a full-time high-school curriculum to pregnant and parenting young women in an on-campus Gordon Bell High School classroom.

TRAINING OPPORTUNITIES FOR YOUTH

Consists of four unique, pre-employment and employment services aimed at providing youth with skills to join the labour market.

TRANSITION, EDUCATION & RESOURCES FOR FEMALES

Is a transition, healing and education program for females and transgender individuals of all ages who have been exploited/trafficked through the sex trade.

SOCIAL ENTERPRISE

Two training opportunities that provide supervised, hands-on, training and employment for youth and adults who benefit from the increased support provided. Individuals gain skills that can help them transition to continued meaningful employment in the community.

ND Property

Services provides training in lawn

care and property maintenance.

Café 6

provides training in the food preparation industry.■



Theresa at our head office on Portage Avenue.





THERESA'S 285

Volunteering is a selfless act.
An act of someone freely
giving their time and labour
for community service.

Volunteering can be a great way to give back to the people around you while lending your expertise to a cause you are passionate about.

That's what Theresa had in mind when she approached New Directions, wanting to volunteer

in our Child Home Services (CHS) Program.

"I have a passion for working with kids, and I wanted to help in whatever capacity I could," said Theresa. A passion she gets from her family, who provide social services to their church and community members in Nigeria.

Unfortunately, the Covid-19 pandemic prevented any possibility of volunteering her time with the CHS Program.

But that little setback didn't stop Theresa from helping others. In the Fall of 2021, Theresa volunteered 285 hours with several of our Service Areas as an Administrative Assistant.

"New Directions' goals align with my passion for helping families have a better life in society. I wanted to give my time somewhere where I could really help."

At the time, Theresa was raising three boys and working as Admin Support at the James Armstrong Richardson International Airport, assisting in the screening of international travelers.

“NEW DIRECTIONS’ GOALS ALIGN WITH MY PASSION FOR HELPING FAMILIES HAVE A BETTER LIFE IN SOCIETY. I WANTED TO GIVE MY TIME SOMEWHERE WHERE I COULD REALLY HELP.”



Over the next three months, Theresa created client e-files from physical copies and ensured our Service Areas were keeping track of clients' information, along with other administrative tasks that came up during that time.

“She was always very enthusiastic about coming into the office every day and helping my team as best as she could. While taking great initiative to complete her tasks correctly and on time,” said Johanna Haines, Business Manager at New Directions and Theresa's Supervisor during her volunteer period.

Eventually, Theresa was hired as a full-time staff member on our Business Enterprise Resources team, one of the areas she had done her volunteer work, so she was already oriented to the job and acquainted with the team.

“When an administrative assistant position needed to be filled, it was easy to make the decision to hire her as part of my team, as a New Directions staff. A decision I am very happy with,” added Haines.

“It's hard to come up with adequate words to describe this great opportunity. Thanks once again for letting my passion to

become my work. I have made an unforgettable difference in my career growth as New Directions has impacted a good cause. Thank you, a ton, for your enthusiasm and the strength to do my bit.”

Well, Theresa, we want to thank you for your time and all your hard work! New Directions is a better place with you on our team. ■







**BIG FEELINGS
COME AND GO
ONLINE VIDEO**

.....

4200+

Unique views

**NUMBER OF
ND FRONT LINE
WORKERS**

.....

724

Helping foster hopes
and dreams of people in
our community

**INDIVIDUALS
SUPPORTED**

.....

2500+

Across our
many programs

**MULTIDISCIPLINARY
ASSESSMENT AND
CONSULTATION CENTRE
(M.A.C.C.)**

.....

382

Individuals supported with psychology,
psychiatry, occupational therapy and
other health-related services

**PRACTICUM
STUDENTS**

.....

80+

Learning and contributing
to the improvement of
our services

**BIG FEELINGS
COME AND GO BOOK**

.....

11

Language translations
(including Ukrainian and Russian,
being distributed to refugees and war
displaced persons in Europe)

**MAKING SENSE
OF TRAUMA**

.....

7300+

Webinar registrants



THANK YOU TO OUR ENDOWMENT FUND DONORS

New Directions would like to take this opportunity to thank our generous donors who have made gifts to our Endowment Fund. The purpose of the Endowment Fund is to provide funding for activities and supports that are often financially out of reach for individuals we serve.

Here are a few of the many ways your donations have impacted the lives of individuals we support:

- **Funds were used to replace a broken pair of glasses.**

Without your support, this individual would have had to wait up to two years for a replacement.

- **Food security is an ongoing concern for many people** we support. Your generosity offered many individuals and families much-needed groceries during this critical time. It also ensured over 65 people had enough food during the holidays.

- **Your gifts gave a family warm clothes** during our harshest winter in decades.

- **Your generosity offered a young man the opportunity to go home** during the pandemic, during a time when he was struggling, feeling isolated, and wanted to be with his family and on the land he grew up on. Your gift made this possible and he is grateful for your generosity.

THE CLIVE BATE AWARD RECIPIENT

Each year, the Clive Bate Scholarship is awarded to youth with any special need they may have that they cannot get further funding for. Anne was one of the three scholarship recipients in 2021. She was nominated by the Transition, Education, and Resources for Females program for her commitment to expanding her knowledge and using her voice to empower her community.

“It makes me happy knowing that I can help others be better for themselves, and it builds my self-esteem,” says Anne.

“Anne was always an independent learner,” says Pat Opitz, the Classroom Coordinator who supported Anne. “Early in 2021 she approached her math teacher and requested homework so that she could learn

and practice algebra on her own time. She would work through booklets at home during remote learning periods during the pandemic,” says Pat.

During her time in the program, Anne did her best to make it a more welcoming place.

“Being a part of this program, it’s like my family. I’m always welcome here, and I try to welcome new people and make them feel a part of the group,” says Anne.

Anne’s teachers realized that, although she was struggling with being away from the physical space at school, she was able to use math as self-care and to continue learning and taking care of herself in the toughest school scenario.

Anne is also committed to understanding her culture and

advocating for others. She has a passion for learning and speaking about her experiences as a Child in Care. In her Social Studies class, Anne wrote a letter to Mayor Brian Bowman, expressing her views and concerns about police brutality. She also approached her teacher and asked for resources and websites that would help her connect with advocacy groups in her community, so that she could continue to research on her own.

She is curious and has a thirst for knowledge. More importantly, Anne wants to educate herself so that she can be a voice for change. The Clive Bate Scholarship offered Anne the opportunity to purchase a personal laptop and continue her education outside of the classroom. ■

THE CLIVE BATE SCHOLARSHIP HISTORY

The Clive Bate award is made available to New Directions from the Estate of Mr. Bate. He was a former Executive Director of New Directions in the 1960s and 70s when it was called The Children’s Home of Winnipeg.

Through a special endowment from the Bate Family Fund for Youth, in memory of Clive C. Bate we can support youth with any special need they may have for which they cannot get any other funding.

.....
Managed by The Winnipeg Foundation, the New Directions Endowment Fund began in 2002. The Foundation provides an annual distribution of income to New Directions. The principal remains invested with The Winnipeg Foundation.

We would also like to thank The Winnipeg Foundation for providing matching grants to the fund



THANK YOU TO OUR GENEROUS ENDOWMENT FUND DONORS

INDIVIDUALS

Anna Albo*

Marina Albo

Vivian Albo

Ian Anderson – In honour of
Jerry Horaski

Joan Blight

David Brand

Christina Cassels

Judy C. Chorney – In memory
of Keith Menard

Jim Court

Janet and Neil M. Cutler

Nellie Dale – In memory of
Christopher Hodgson

Dena Decter

Wanda Deong

Lorraine Desmarais

Dr. Charmayne Dubé

François Dumaine

Cecile Encontre – In memory
of Keith Menard

Marianna Fedoryshyn

Folklorama – In memory of
Dr. Rayleen DeLuca

Dr. Jennifer Frain and
Dr. Matthew Decter

Sean Gander

Cam Giavedoni

Barry Hammond

Brian Harris

Kelly Hashemi

Jason Hooper – In memory of
Christopher Hodgson

Judith Huebner

Joan Kunderman

Anita Lavoie – In memory of
Keith Menard

Noreen Levesque – In memory
of Christopher Hodgson

Hai Luo

Maxie Macklin

Dave and Colette Macpherson

Louise Mazur*

Aveeve and Sam McLaughlin

Jamie McPetrie

James Mercury

Rabia Mir – In memory of
Christopher Hodgson

Jorge Molina-Marinez

Hogan Mullally and
Meghan Nordman

Joseph and Patricia Mullally

Nicole Murray

Karen Phillips

Julie Puckrin

Marc and Sherri Rittinger

Avrum Rosner

Beverly Sabourin

Ryan Savage

Michael Schroeder

Janice Schwab – In memory
of Keith Menard
Elizabeth Schwersensky
Cheryl Simmonds – In memory
of Christopher Hodgson
David Sitarik
Alma Sobkowich – In memory
of Keith Menard
Jennifer Sokal
Carolyn Strutt
Linda L. Taylor
Rhonda Taylor
Bev Thiessen
Mandie Timko
Joyce Vandersteen – In memory
of Keith Menard
Dr. Christine Watson
Ken Webb
Emily Yakashiro
Anonymous - In memory of
Steve Barber
Anonymous donors – 15

**CORPORATIONS,
FOUNDATIONS AND
ORGANIZATIONS**

Agape Table*
All Charities Campaign
All Saints' Church
Bate Family Fund for Youth,
In Memory of Clive C. Bate –
The Winnipeg Foundation
Canadian Women's Foundation
and Women and Gender
Equality, Government of Canada
Clear Concepts Inc.
Durango Construction Inc.
Fort Whyte Alive
Harlan's*
Homecare Pharmacy Inc –
Leila Pharmacy
Indigo Chapters* – Polo Festival
Inn at the Forks
Manitoba Blue Cross
Manitoba Chambers of
Commerce*
Naut'sa Mawt Resources
Group Inc.
Naylor Canada Inc.
(Wpg Social Committee)

Resolute Technology
Solutions Inc.*
Ross and Bette Jayne Taylor –
The Winnipeg Foundation –
General Fund
Paul Taylor Fund –
The Winnipeg Foundation
RBC Foundation
Richardson Foundation and
United Way Winnipeg
Spruce Developments Ltd.
The Body Shop Kildonan Place *
TIPI Insurance Partners
The Winnipeg Foundation
United Way Winnipeg
Winnipeg Public Library
(City of Winnipeg), Winnipeg
Public Library Board, and
the national TD Summer
Reading Club*

.....
**Gift-in-kind (GIK)*

*Gifts are included from April 1, 2021
to April 22, 2022. We apologize for any
errors or omissions.*





A LONG-EXPECTED CEREMONY

A celebration of the very first National Day for Truth and Reconciliation.

On September 29th, 2021, New Directions had the great pleasure and honour of hosting an event in celebration of the very first National Day for Truth and Reconciliation.

Created on June 3, 2021, through legislative amendments made by Parliament, the federal statutory

holiday honours the lost children and survivors of residential schools, their families, and communities. New Directions is pleased to honour the day as a statutory holiday in its yearly calendar. The event brought together over 100 people, including individuals supported by New Directions



Cookies made for the event by some of our supported individuals.

Local artist Rey performs a rap with self-reflective and meaningful lyrics.



*New Directions staff
at the event.*



staff and community members, and featured presentations from Indigenous comedian Joyce Delaronde, also known as Skinny Kookoo, World Jigging Champion Ryan Guy Richard and local rapper Rey.

In addition, the attendees had the opportunity to listen to the powerful personal story of

Gramma Shingoose, an Elder and activist in Winnipeg's Indigenous community, as well as from two Knowledge Keepers; Charlotte and Gail, who share their wisdom and guidance with youth in a few of our programs.

We are grateful for all the performers and speakers that shared their time, passions, and stories at our event.

Having the opportunity for the New Directions community to come together to recognize and acknowledge such an important day was powerful and inspiring. ■



*World Jigging Champion Ryan Guy
Richard performs at the event.*

Various Adult Day Services staff.



Knowledge Keeper Charlotte shares her story with attendees.

New Directions’ Darlene gifts fellow co-worker Steven a blanket.



WE COULDN'T DO IT WITHOUT YOUR ONGOING SUPPORT!

We would like to acknowledge and thank our sustaining funders for their ongoing support in our work.

They include the Province of Manitoba Departments: Economic Development and Jobs, Education, Families, Justice, Training and Health, Seniors and Active Living

The Government of Canada Departments including The Public Health Agency of

Canada, the Employment and Social Development Canada, and the Department of Justice.

We continue to enjoy a very positive relationship with our major funders and appreciate their ongoing insights as well as their financial contributions. The Winnipeg Regional Health Authority, Manitoba Housing and Renewal Corporation, The Winnipeg Foundation, The Thomas Sill Foundation, The United Way, and Community Food Centres

Canada have assisted us with specific projects to meet community needs and we are most grateful for their ongoing support.

We would also like to acknowledge the support we receive from the School Divisions, specifically: Louis Riel, Pembina Trails, St. James Assiniboia, and Winnipeg School Divisions.

The Child and Family Services Authorities and Agencies have also referred and supported individuals using our services. ■





LOCAL RESOURCES FOR GLOBAL ISSUES

Winnipeg-born-and-raised book being used to help families displaced by the war in Ukraine.



Families seeking refuge in Finland due to the war in Ukraine are now being offered support in a storybook developed by two Winnipeg-based organizations.

Fruit of a partnership between New Directions and The

Canadian Centre for Child Protection (C3P), *Big Feelings Come and Go* is a storybook that helps families understand and manage difficult emotions. The book teaches children the concept of freeze, flight, and fight responses, along with how to care for their body and mind when their emotions become overwhelming.

The two agencies have partnered with Suojellaan Lapsia ry, a Finnish child protection organization, to provide Ukrainian and Russian copies of the book to refugee families that were displaced by the conflict in Ukraine.

“Many years of clinical work were the inspiration and basis for creating this book, to help children and their caregivers talk about the scary things in life. We are so grateful that this





book has been translated into Ukrainian and Russian and is being made available to those most directly impacted by the war in Ukraine,” says Dr. Jennifer Frain, C.Psych., Chief Executive Officer of New Directions.



Big Feelings Come and Go has been recognized globally as a resource for children, having been now translated to 11 different languages since its release. ■





THANK YOU FOR YOUR CONTINUING SUPPORT

CORPORATE SUPPORTERS:

Agri-Food Canada

Food Rescue

Safeway

Saje

Second Harvest

Sprott Foundation

INDIVIDUAL SUPPORTERS:

Students from the Faculty of Medicine, University of Manitoba

Dr. Aynslie Hinds, BAH, BSc, MS PhD,

Senior Research Associate, Institute of Urban Studies, University of Winnipeg

Dr. Javier Mignone
Professor, University of Manitoba, Department Of Community Health Sciences and PROPER (Program and Policy Evaluation Research Group)

Shivoan Balakumar
Advisor, MSc, Senior Project Manager, National Collaborating Centre for Infectious Diseases, CHIRP Advisor, Community HUB: Information and Research Partnerships

Sandi Gendreau
MSW, Coordinator: Field Education/Placements, Booth University College

Teresa Allison,
OT Reg (MB), Instructor/Fieldwork Outreach Developer, Department of Occupational Therapy, College of Rehabilitation Sciences, University of Manitoba

Cynthia Sottie
Associate Professor, Social Work, Booth University College

Margarete Anne Campbell-Rempel
Academic Fieldwork OT Reg Coordinator, Department of Occupational Therapy, College of Rehabilitation Sciences, University of Manitoba

Patti Kafka
Field Program Assistant, Fort Garry and Inner City Campuses, Faculty of Social Work, University of Manitoba

Dr. Michael Yellow Bird, MSW, PhD
Dean – Faculty of Social Work, University of Manitoba

David Sullivan, MSW
Practicum Coordinator, Faculty of Social Work, University of Manitoba

Dr. Keith Lowe, PhD
Assistant Professor, Community Health Sciences, University of Manitoba

Georgette Rochone
WIL Coordinator – Community Services, Red River Polytechnic

*Training Opportunities for Youth
program individuals build a snowman after
a land-based lesson at Kildonan Park*

Dr. Doug Williams
Chair, Psychology Department,
University of Winnipeg

Manuela Parcels, BH Ecol
Workplace Placement Coordinator
Division of Extended Education,
University of Manitoba

Dr. Judith Hughes
Associate Dean Faculty of Social
Work, University of Manitoba

Colleen Isfeld
Academic Coordinator,
Disability & Support Program,
Red River Polytechnic

Diane Parris
Academic Coordinator, Child and
Youth Care, Red River Polytechnic

Patricia Haberman
Field Placement Liaison,
Yellowquill College

Carl Heaman-Warne, M.MFT,
PhD Candidate, RMFT
Practicum Coordinator for Master
of Marriage & Family Therapy
Program Faculty of Education,
University of Winnipeg.





VACCINE CLINIC A BIG SUCCESS!

New Directions had the opportunity to host a Covid-19 Vaccine Clinic on June 24th, 2021.

The clinic took place at the Supported Independent Living Offices at 514 St. Mary Avenue and was open to anyone in the New Directions community.

150 first or second doses were given out to individuals we support, staff, and quite a few walk-up community members, who were all treated to a hot dog BBQ, cooked by our Adult Day Services program.

Many of the community members were thrilled to see people from New Directions, something they hadn't been able to do in a long time.

We also saw many individuals we support, and staff members get their Flu vaccine in one of our clinics throughout 2021. ■









THANK YOU FOR THE EXPERIENCE YOU’VE SHARED!

1 Just City
204 Property Restoration Services
24 Seven-yard maintenance
Above All Roofing
Anytime Fitness
Baked Expectations
Barchet’s Grocery
Botanical Paper Works
Brady Landfill
BUILD
Bull Dog Pizza
Café 6
Canadian Auto – Unicity
Canadian Goodwill Thrift Shop
Canadian Museum for
Human Rights
Canadian Tire – Polo Park,
Unicity, Vermillion Road
Centre Plate – Goodlife Centre
City Bread
City of Winnipeg – Water and
Waste Department

Dhillon Auto Group
Dollar Tree – St. James
eShine Cleaning Services
Freshco – St. James
Giant Tiger – Donald Street,
Main Street, Pembina
Globe Moving & Storage
J.A.W. Systems
Kane Millwork
Kauaii Crepe
Kidz Inc
Mattress Warehouse and More
MITT Mainstreet campus
Construction Program
Mother Earth Recycling
ND Property Services
No Frills – Main Street
Norak Cross Fit
Operation Snow No More
Landscaping
Pita Pit
Purpose Construction

Reinhardt Baerbig
Construction Company
Restmore Bedding
Royal Pizza
Safeway – Reenders
Shopper Drug Mart
Smitty’s Restaurant
Sobeys Inc.
Student Works Painters
Subway – 1107 Pembina
Tallest Poppy
Talon Roofing
The Flower Lady
The Forks
The Wrench
Thrive Thrift Shop
Valley Powder Coating
Viking Landscaping
Western Scrap Metals
Westman Courier & Freight
Winnipeg Squash and
Racket Club
Wolseley Daycare
Work 4 It

.....
*As well, Adult Day
Services would like to
acknowledge and thank
the numerous New
Directions’ staff who
have utilized our yard
care services, moving
company and our home
cleaning business. We
really appreciate your
support!*



CHILD HOME & SUPPORT SERVICES

A responsive and flexible partnership

The **mission** of New Directions is to provide responsive and individualized services that foster the hopes and dreams of people and their communities. Our **vision** is a community where all people have well-being are honoured, and can dream.

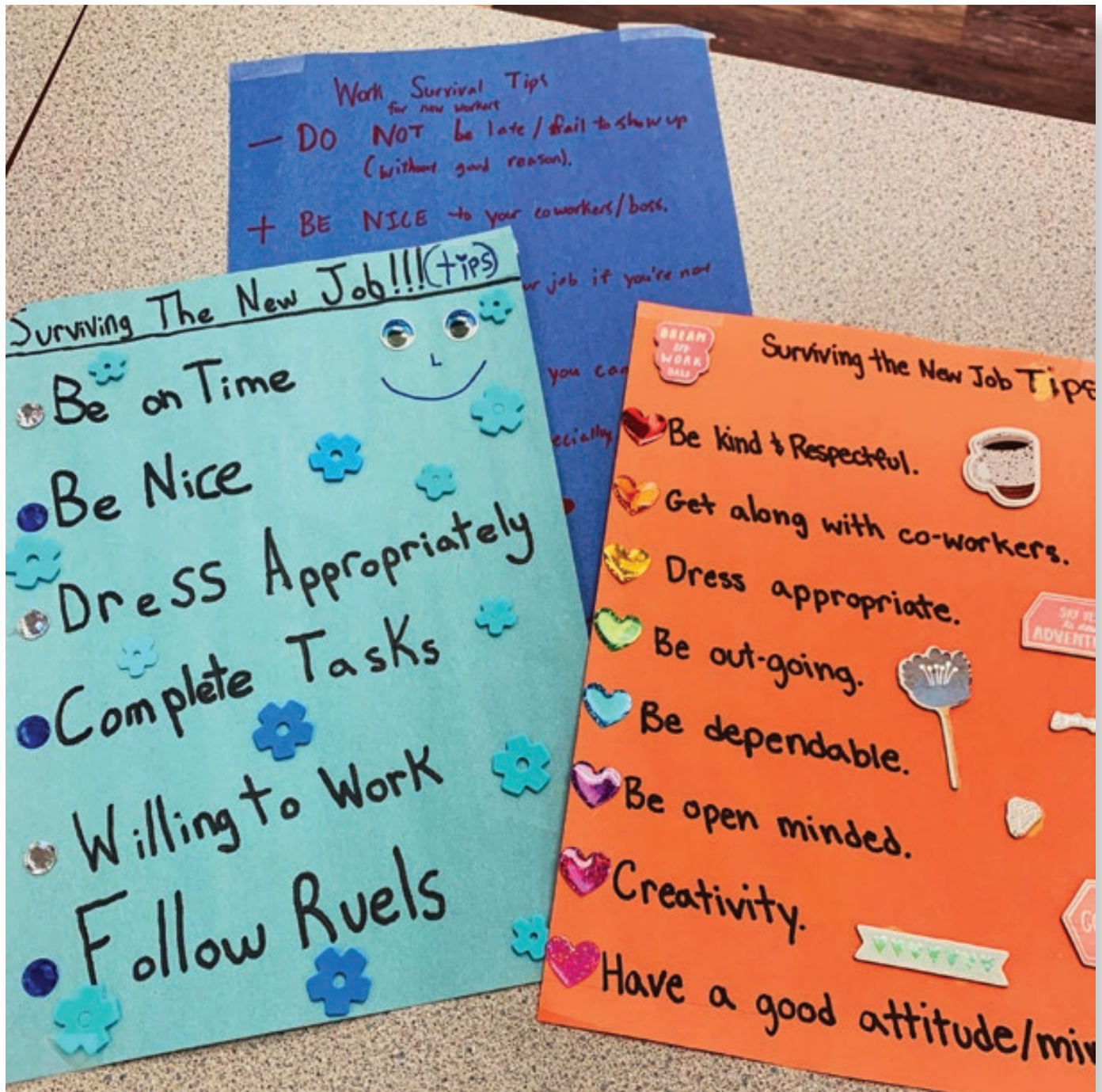
Child Home Services' **philosophy** is to offer supports tailored to the specific needs,

hopes, circumstances, and goals of children, youth, and their families. We offer these supports based on an ongoing dialogue and partnership with them, their significant others, and their support system.

Child Home and Support Services offers alternatives for children, youth, and their families through a flexible continuum of services guided by our **Roots approach**. This


approach aims to give children and youth a safe foundation that supports their growth, allows them to explore the world and to take the risks to pursue their dreams. Our Roots approach helps children and youth trust that the meaningful connections they have will hold, nurture, and guide them.

The services offered by Child Home Services are based on what is needed to strengthen these roots. Roots works with children, youth, their guardian, family, and the referring agency to develop the service and walks with them in the path towards the desired outcomes, collaboratively and flexibly adapting services accordingly.



*Artwork produced by one of our Training Opportunities for Youth students,
created to inspire first steps to creating confidence in the classroom.*





“Our vision is a community where all people have well-being, are honoured, and can dream.”

All services pursue the same end point: support children and youth to settle into a living situation where they can grow, develop, belong, and be loved and respected. This can involve reunification with parents or significant others, living independently, or transitioning into the adult system of supports while keeping the meaningful relationships in their lives and valuing who they are.

Our services include Community Homes for Children, Family Connections, Independent and Mentored Independent Living, as well as the Family Stepping Stones Program.

Community Homes for Children offers a shared home environment for children between the ages of 8 to 18.

These are spaces where they can experience healing from past hardships, repair and strengthen meaningful relationships, and/or develop skills to move towards a healthy development, and pursue their goals and dreams.

Family Connections offers supports for children and youth to have successful opportunities to fulfil their dream to reunify with their loved ones or to move into an alternative home (foster home) where they are loved, supported, can belong and contribute, and can keep meaningful connections with their family and community. Initial supports match the needs of children and family and are phased out as needs decrease.

There is also a **landlord mentor** model where youth can live in the community and develop independent living skills with individualized supports in place. The landlord has a dual role of being a regular landlord and mentor. The idea is for the landlord to be supportive and act as a role model and pass on important life skills.

The **independent living** model offers supports for youth who have developed more basic skills to live independently with supports and are interested in starting to live more independently as they continue working towards their adult life goals and solidify their independent living skills.

FAMILY STEPPING STONES PROGRAM

Our newest program started in 2021. This program offers supports for families who struggle to stay together due to various factors and whose children are in care of child and family services or at risk of coming into care. The values that guide life in the home, the routines, and plans are set with the parents and/or relatives based on their culture and traditions.

“The Family Stepping Stones Program is an important strategy for us. It allows us to more flexibly respond to the needs and circumstances of children, youth, and their families. It allows us

to establish a partnership and problem solve the challenges together, tapping into each others’ strengths to tailor the service to the child and family rather than expect the child or family to fit into a model or have a limited say in their lives,” shared Dr. Alicia Ordóñez, Senior Director, Child Home, Deaf, and Clinical Services.

The unique aspect of this program is that the parent(s) are expert partners who can engage in routines, teachings, guidance, and provide support for their children. No sustained period is required; the goal is to help build parenting skills and support meaningful attachment.

This program reflects the understanding that it is in the best interest of the child to keep them connected to their families, culture, and communities.

The work of New Directions is possible because of our dedicated and caring staff members.

We are grateful we were able to keep supporting children into achieving the life they can only dream of – thank you to the many staff for continuing to support this life-changing work. And thank you to the families and referring agencies for their trust and partnership.■

● “This program reflects the understanding that it is in the best interest of the child to keep them connected to their families, culture, and communities.”





EXPANDING IN NEW DIRECTIONS

The mission of the New Directions' Adult Home & Support Services

Providing housing and Day Service support to adults living with intellectual disabilities or mental health issues has been the driving mission of the New Directions' Adult Home & Support Services (Adult Services) since its creation.

Comprised of six different Service Areas, our Adult Services


have achieved their mission, many times over, helping individuals find appropriate housing and their place in the community.

The support from these Service Areas began to spread outside of Winnipeg, seeing expansion into rural communities like Springfield and Portage la Prairie. Some of these expansions

were met with difficulties, but many communities welcomed us and our services with open arms.

The COVID-19 Pandemic had other plans for the world, and our Service Areas weren't safe from its reach. Struggling against constant changes in Provincial Regulations, PPE and testing requirements, as well as putting every person's health at risk everyday, the pandemic tested our collective limits to support individuals in regular environments.

In this challenging scenario, New Directions has shown its true grit, and our services continued to expand, supporting more and more individuals, especially in rural communities.



“Adult Services have achieved their mission, many times over, helping individuals find appropriate housing and their place in the community.”

“We had to re-think how to provide our services,” said Dr. Charmayne Dubé, Senior Director of Adult Services.

“While people’s health was our number one priority, we needed to continue providing the supports that many individuals relied on each day.”

It was thanks to the sheer adaptability and resilience of staff members, as well as a large amount of patience from the individuals we support that allowed our Service Areas to make the best of a tough situation. Despite what the pandemic threw our way, we continued to grow, responding

to the needs of individuals in our communities...especially our rural communities.

This is what led to the birth of the formal Regional Services, an umbrella service that provides “Winnipeg-based” services in rural areas like Portage la Prairie. But working in rural areas brings a difficult challenge; providing services to individuals who need support who are spread out over wide areas.

“The driving philosophy of Regional Services is that we will come to you,” said Jason Dyck, Service Manager for Regional Services. “We want to make sure we work with the individuals and the community to provide the best support possible.”

To live up to that goal, Regional Services is also working diligently with already established agencies in rural areas to augment their services by accessing New Directions’ resources if needed.

“This is just the beginning of the support we can provide to rural communities,” said CEO Dr. Jennifer Frain. “Already we are expanding what Regional Services provides to individuals needing support, and we are looking forward to working with the people in western and rural Manitoba to provide the best support possible for the people and communities we will serve.” ■



CELEBRATING OUR AMAZING STAFF MEMBERS

Each year, New Directions celebrates the anniversaries and accomplishments of our staff members throughout the organization. In 2021, we did this by hosting our second Years of Service Live Stream on November 25th during which, we honored 105 staff members for anniversaries ranging from 5 years to a record-breaking 45 years!

45 YEARS OF SERVICE

Dave Macpherson

30 YEARS OF SERVICE

Tina Fudali



20 YEARS OF SERVICE

Ali Nasajpour
Charmayne Dubé
Darlene Daniels
Elaine Newhook
Jennifer Frain
Mandy Bergen
Susan Strike

15 YEARS OF SERVICE

Evelyn Campbell-Bidulka
Joseph Brasseur
Keira Mattson
Kim Wayne
Matt Barton
Michelle Andrade
Rob Wray
Robin Pinder
Sonia Spence



Dave Macpherson at the 2016 Years of Service Recognition event

THANK YOU DAVE !

Dave started his incredible journey with New Directions before it even had that name. His first job was in 1976, when he worked a summer job at the Children's Home Camp. He moved on from the Camp to work for the next five years in the Greendell Learning Assistance Centre and Ellen Street Homes for Children as well as Aberdeen School.

In the early 1980s, Dave became the Case Manager for the Greendell & King's Drive homes. He quickly moved on from that position and from the 1980s to the 2000s, Dave was one of two Program Managers of Children's Home Services, taking over sole responsibility when his colleague Allie Boardman retired.

10 YEARS OF SERVICE

Adrian Rae
Aera Advincula
Allery Armstrong
Chona Bautista
Christopher Martin
Duane Bishop
Francia Advincula
Jason Cooper
Kien Van Huyn
Kristi Soloway
Kyle Lagiewka
Lisa McAulay
Leanne Kennedy
Paige Thunder
Pierre Hakizimana
Sean McGrath
Sharon Marsden
Silindile Mabaso

5 YEARS OF SERVICE

Abraham Kanu
Ademuyiwa Adewunmi
Alazar Mengisteab
Amit Asdhir
Boma Cookey-Gam
Brianne Clifford
Candice Duquette
Carly Abate
Caroline Kyoona
Cori Reimer
Dale Irving
David Danladi
Dawn Cullen
Devra Buhler
Doris Chukwuma
Elaine Philips-Turski
Eleshaday Tesfay

Elizabeth Schwesensky
Halimatu Kamara
Harouna Samura
Itohan Onwumere
Iuliia Kovalevych
Ivan Kovalevych
Jayson Thorsteinson
Jessica Green
Joanne Boisvert
Jocelyn Cordeiro
Joseph Steele
Kate McGinn
Katrina Borkowsky
Ksenia Collins
Leanna Campbell
Lisa Howe
Malek Zatout
Mandy Loewen
Marc Richards
Marie Bergen
Matthew Allen

*Shift Staffed Homes' Coordinator
John plants a tree in honour of one of
our individuals who passed away.*

Mike Parisien

Mona Neufeld

Moufid Diffallah

Nicole Irving

Oluwafemi Taiwo

Paul Bergquist

Rhoda Allen

Rodas Gebrezgi

Samson Baliho

Sanaa Lakhani

Sara Kassaye

Shae Dillabough

Shantol Sheppard

Sylvester Dimkpagu

Tigiste Tegegne

Uthman Olugbenga Odusose

Vanessa Limon

Yosef Gutema

Yoseph Araya





PRESENTATION OF FINANCIAL STATEMENTS

On behalf of the Finance Committee, I am pleased to present the financial statements of New Directions for Children, Youth and Families for the year ended March 31, 2022. This is my first year as treasurer and to say it has been challenging is an understatement. In addition to the challenges of COVID-19 pandemic, there was the fire at 717 Portage Avenue that will take months to repair forcing the organization into temporary workspaces. Then as the year

closed, we have seen the significant increase in gas prices fueling inflation and adding to the cost of operations going forward.

Through these challenges the leadership team has responded in exemplary fashion keeping the operation going forward and focusing on solutions as problems arose.

One of these decisions has resulted in the organization incurring a deficit for the first time in many years. The decision to continue the Covid incentive pay until the end of the year was difficult as it knowingly placed the organization in an operating loss but was seen as the best

solution to some of the challenges our work force faced. Despite this loss, New Directions still presents a strong financial position going forward which further evidences the effectiveness of the leadership of the organization in these very difficult times.

The effective financial management of such a large and diverse organization is a team effort.

I would like to congratulate CEO Jennifer Frain, CFO Michael Schroeder, and their entire team of committed professionals as they deserve recognition and our thanks for delivering stellar financial results over the past three years despite the challenges they faced.

I would also like to thank the Board and the Finance Committee for their assistance and valuable input relating to financial matters. Their active participation in the financial affairs of the organization is greatly appreciated.

It is a pleasure serving on the Board of New Directions and it's a privilege working with such dedicated Board members and staff. ■

JIM COURT
Treasurer





REPORT OF THE INDEPENDENT AUDITOR ON THE SUMMARY FINANCIAL STATEMENTS

To the Board of Directors of New Directions for Children, Youth, Adults and Families Inc.

OUR OPINION

In our opinion, the accompanying summary financial statements of New Directions for Children, Youth, Adults and Families Inc. (the Organization) are a fair summary of the audited financial statements, on the basis described in the note to the summary financial statements.

THE SUMMARY FINANCIAL STATEMENTS

The Organization's summary financial statements derived from the audited financial statements for the year ended March 31, 2022 comprise:

- the summary balance sheet as at March 31, 2022;
- the summary statement of revenues and expenses for the year then ended; and
- the related note to the summary financial statements.

The summary financial statements do not contain all the disclosures required by Canadian accounting standards for not-for-profit organizations. Reading the summary financial statements and the auditor's report thereon, therefore, is not a substitute for reading the audited financial statements and the auditor's report thereon.

THE AUDITED FINANCIAL STATEMENTS AND OUR REPORT THEREON

We expressed an unmodified audit opinion on the audited financial statements in our report dated May 26, 2022.

MANAGEMENT'S RESPONSIBILITY FOR THE SUMMARY FINANCIAL STATEMENTS

Management is responsible for the preparation of the summary financial statements on the basis described in the note to the summary financial statements.

AUDITOR'S RESPONSIBILITY

Our responsibility is to express an opinion on whether the summary financial statements are a fair summary of the audited financial statements based on our procedures, which were conducted in accordance with Canadian Auditing Standard (CAS) 810, *Engagements to Report on Summary Financial Statements*.

PricewaterhouseCoopers LLP

Chartered Professional Accountants, Winnipeg, Manitoba, May 26, 2022

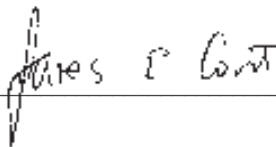
SUMMARY BALANCE SHEET

As at March 31, 2022

	2022 \$	2021 \$
ASSETS		
CURRENT ASSETS		
Cash and cash equivalents	2,526,983	4,160,111
Accounts receivable	4,238,806	1,976,876
Prepaid expenses and other assets	719,187	771,806
	7,484,976	6,908,793
CAPITAL ASSETS	13,676,602	12,021,454
	21,161,578	18,930,247
LIABILITIES		
CURRENT LIABILITIES		
Accounts payable	3,120,062	1,839,389
Accrued vacation pay	1,908,768	1,874,382
Deferred tenant inducements	1,672,673	1,892,726
Working capital advances – Province of Manitoba	1,997,991	1,997,991
Current portion of deferred contributions	609,467	593,888
Current portion of long-term debt	2,356,507	504,308
	11,665,468	8,702,684
DEFERRED CONTRIBUTIONS	992,796	217,542
LONG-TERM DEBT	3,329,920	3,710,146
OTHER LONG-TERM LIABILITIES	341,204	543,031
FORGIVABLE LOAN	1,306,731	1,367,352
	17,636,119	14,540,755
NET ASSETS		
NET ASSETS INVESTED IN CAPITAL ASSETS	6,683,444	6,439,648
NET ASSETS INTERNALLY RESTRICTED	537,146	893,146
UNRESTRICTED NET DEFICIT	(3,695,131)	(2,943,302)
	3,525,459	4,389,492
	21,161,578	18,930,247

APPROVED BY THE BOARD OF DIRECTORS

 Director

 Director

SUMMARY STATEMENT OF REVENUES AND EXPENSES

For the year ended March 31, 2022

	2022 \$	2021 \$
REVENUES		
Government of Canada	909,071	628,774
Province of Manitoba	56,975,942	53,651,724
Child and Family Services Authorities/Agencies	4,105,861	3,915,053
United Way of Winnipeg	110,946	109,921
Other	1,126,490	1,038,627
	63,228,310	59,344,099
EXPENSES		
Operating expenses	64,674,822	58,345,022
(DEFICIENCY) EXCESS OF REVENUES OVER EXPENSES BEFORE THE FOLLOWING INSURANCE PROCEEDS	(1,446,512)	999,077
LOSS ON DISPOSAL OF CAPITAL ASSETS	1,000,000	—
	(417,521)	—
(DEFICIENCY) EXCESS OF REVENUES OVER EXPENSES	(864,033)	999,077

BASIS OF PRESENTATION

These summary financial statements have been derived from the audited financial statements of New Directions for Children, Youth, Adults and Families Inc. (New Directions) for the year ended March 31, 2022.

The criteria developed by management for the preparation of the summary financial statements is as follows: that the information included in the summarized financial statements is in agreement with the related information in the complete financial statements, and that the summarized financial statements contain the information necessary to avoid distorting or obscuring matters disclosed in the related complete financial statements, including the notes thereto, in all material respects.

A full set of the financial statements including significant accounting policies and other explanatory information is available from New Directions.

Collage made by individuals in our Kriya program.





NEW DIRECTIONS

Cover artwork made by
a 9-year-old child in one
of our Community
Homes for Children.

GRATITUDE



NEW DIRECTIONS
FOR CHILDREN, YOUTH, ADULTS & FAMILIES

500-717 Portage Avenue, Winnipeg, MB. R3G 0M8

T: 204.786.7051 F: 204.774.6468

newdirections.mb.ca

Follow us   



United Way
Winnipeg

